

Animals need food, water, shelter and space to survive. The place where an animal lives and meets its needs is called a **habitat**.

Adaptations are anything an animal has on or in its body, called a **structure**, or something the animal does, called a **behavior**, that help it to survive and meet its needs in its habitat.

Now you are going to create a new animal!

Directions:

1. First, choose a habitat from the pictures below.
2. Then, design a new animal that would be adapted to survive in that habitat.
3. Think about what adaptations your animal might need to meet its needs and survive in that habitat? Then fill in the chart with your new animal's adaptations.
4. Then, create a diagram of your new animal.
5. Finally write about your new animal.

You can re-watch any of the videos below for inspiration!



[Red Panda](#)



[North American River Otter](#)



[Two-toed sloth](#)



[Southern tamandua](#)



[Golden lion tamarin](#)



[Armadillos](#)

Product of Roger Williams Park Zoo Education Department

Habitats



Tropical Rainforest



Desert



Arctic



Ocean

Product of Roger Williams Park Zoo Education Department



Create a Critter

Name of my new animal: _____

Habitat of my new animal: _____

Structure: Adaptation	Function: How does the adaptation help the animal survive and meet its needs in its habitat?

Product of Roger Williams Park Zoo Education Department



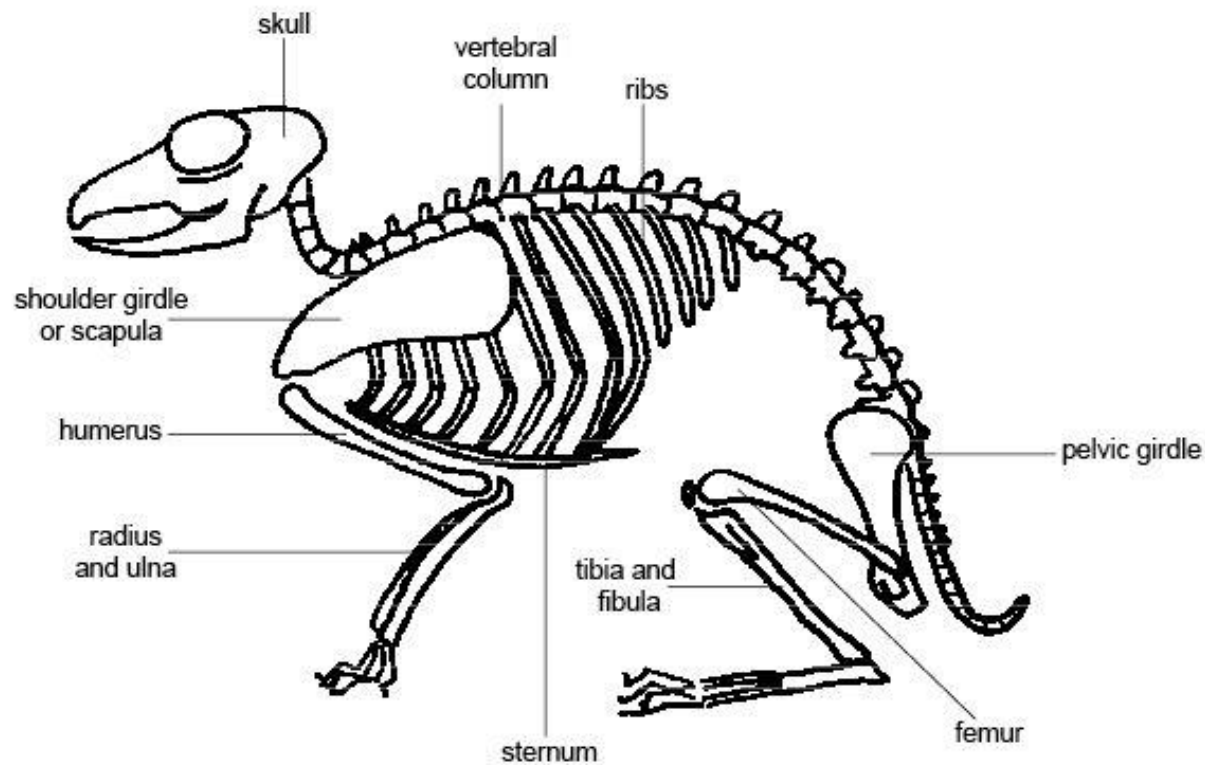
Structure: Adaptation	Function: How does the adaptation help the animal survive and meet its needs in its habitat?

Product of Roger Williams Park Zoo Education Department



Draw a diagram of the animal that you observed. Make sure to label the animal's adaptations. Remember a diagram is a picture with labels. Below is an example of a diagram. You can draw your diagram on the next page or in your science notebook.

Adaptation Chart



Product of Roger Williams Park Zoo Education Department



Product of Roger Williams Park Zoo Education Department



Use the space below or a separate piece of paper to tell about your new animal. Here are some things to include:

- What is your animal's name?
- What is your animal's habitat?
- Where in its habitat does it live?
- How does it move around its habitat?
- What does your animal eat?
- What are some of its predators?
- What does it look like?
- What are some of its interesting adaptations (structures and behaviors)?
- How do those adaptations help it survive in its habitat?

Product of Roger Williams Park Zoo Education Department



Product of Roger Williams Park Zoo Education Department

