

Animals need food, water, shelter and space to survive. The place where an animal lives and meets its needs is called a **habitat**.

Adaptations are anything an animal has on or in its body, called a **structure**, or something the animal does, called a **behavior**, that help it to survive and meet its needs in its habitat.

Directions:

1. Select one of the animals from the videos below to observe again, this time more closely. Every animal has multiple adaptations. Remember to look for **structures**, things that the animal has on its body and think about the **function** of those structures, which is *how* they may help the animal meet its needs and survive in its habitat. For example, a giraffe's long neck is the **structure**, and the **function** is that it allows the giraffe to reach tall branches to eat leaves up high that other animals can't reach.
2. After you re-watch **one** video, fill in the Adaptation Chart on the next page with what you noticed for that animal and then draw a diagram of the animal.



[Red Panda](#)



[North American River Otter](#)



[Two-toed sloth](#)



[Southern tamandua](#)



[Golden lion tamarin](#)



[Armadillos](#)

Adaptation Chart

Animal I Observed: _____

Habitat: _____

Structure: Adaptation	Function: How does the adaptation help the animal survive and meet its needs in its habitat?

Product of Roger Williams Park Zoo Education Department

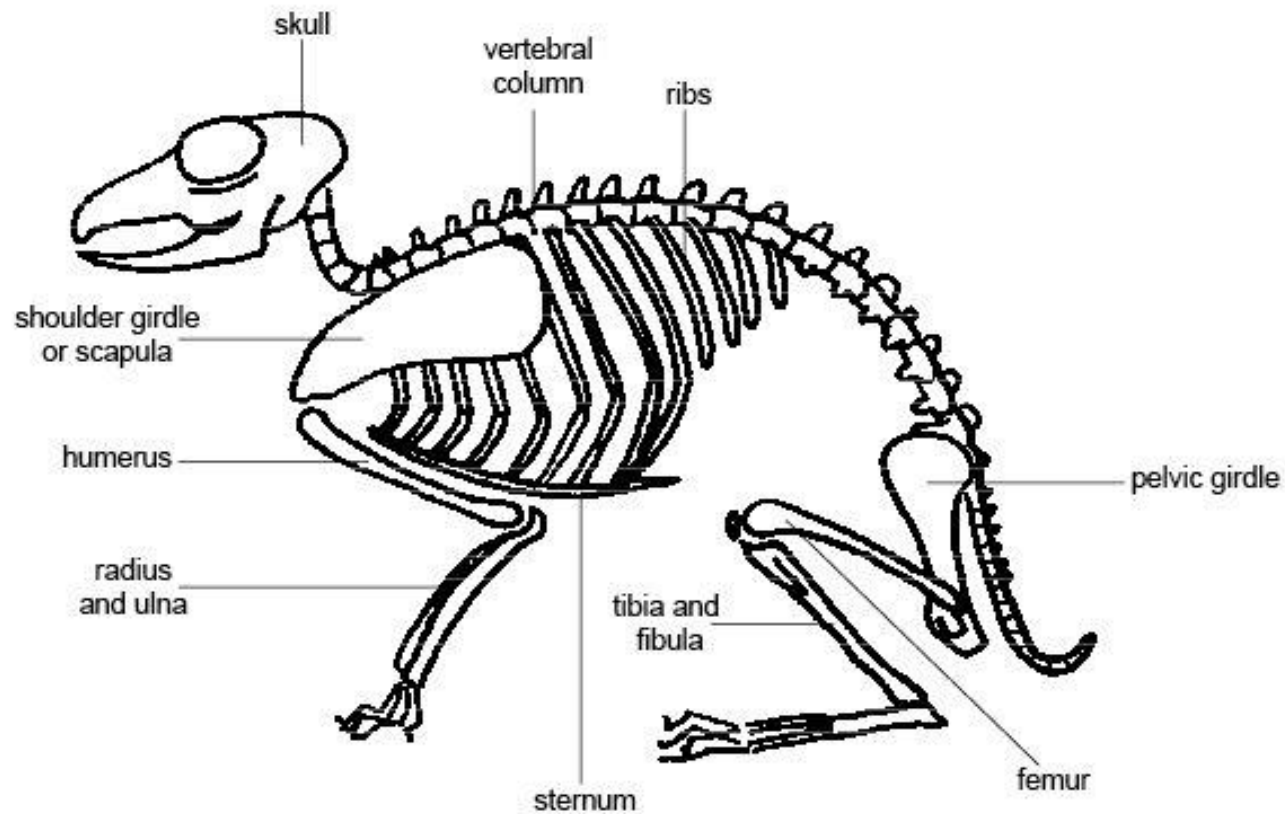


Structure: Adaptation	Function: How does the adaptation help the animal survive and meet its needs in its habitat?

Product of Roger Williams Park Zoo Education Department



Draw a diagram of the animal that you observed. Make sure to label the animal's adaptations. Remember a diagram is a picture with labels. Below is an example of a diagram. You can draw your diagram on the next page or in your science notebook.



Product of Roger Williams Park Zoo Education Department



Product of Roger Williams Park Zoo Education Department

